



PROTECT OUR DRINKING WATER, TOGETHER



WHAT IS SOURCE WATER PROTECTION?

Source water is the raw water taken from lakes, rivers or underground **aquifers** to supply people with drinking water. The goal of Source Water Protection is to protect these sources of drinking water from contamination and overuse, now and into the future.

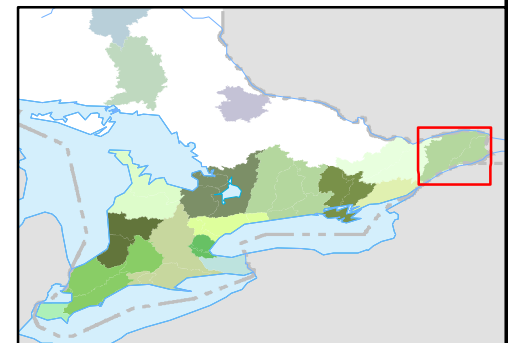
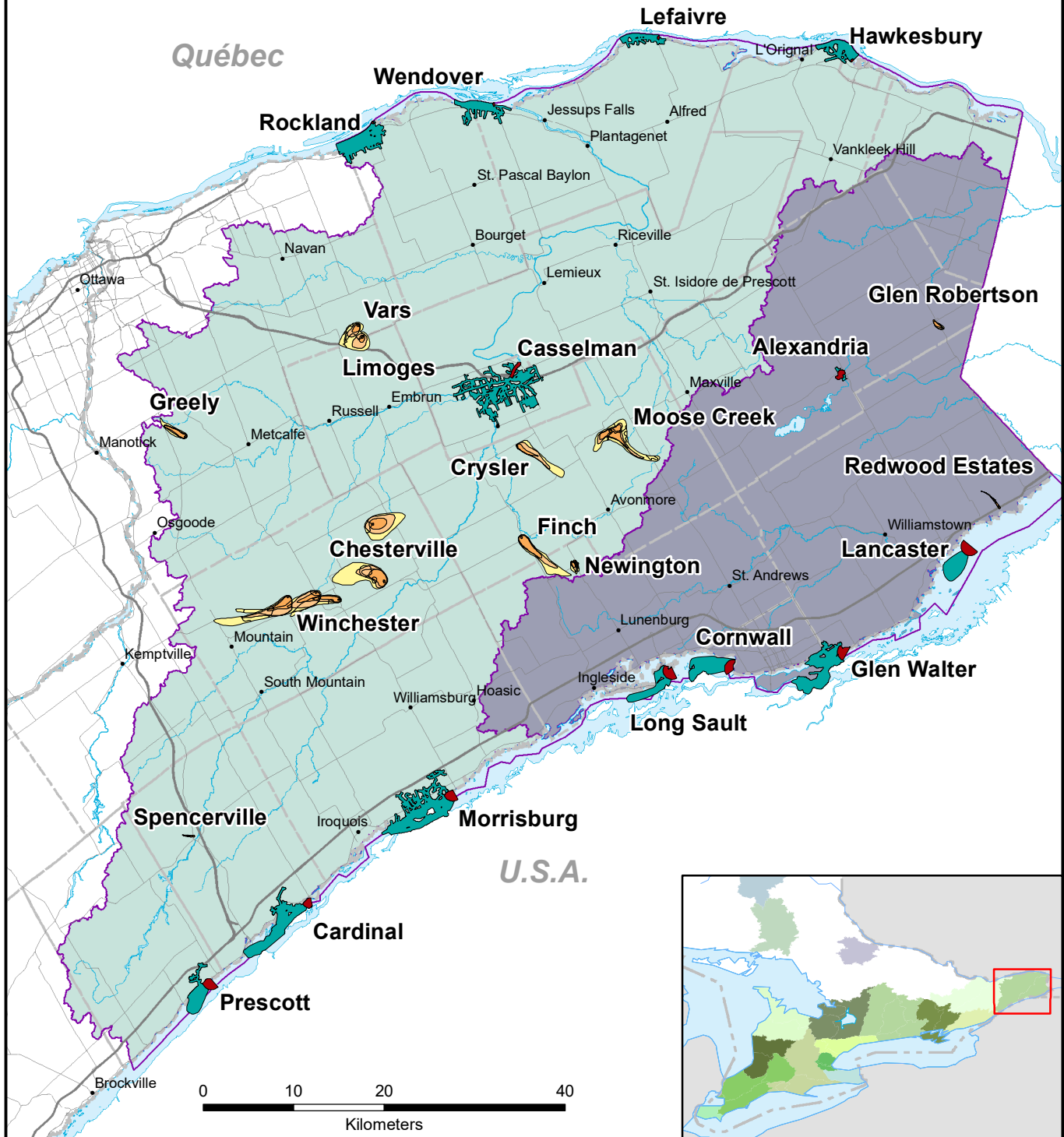
The Ontario Clean Water Act, 2006 requires municipalities and stakeholders to work together to develop watershed-based Source Protection Plans. These plans focus on protecting the source water that supplies municipal drinking water systems.

Scientific studies were completed in 26 communities across our region to determine the sources of our local drinking water. These studies also identify the activities that could adversely impact the quality of the drinking water source. The technical studies can be found in the comprehensive Assessment Report at www.yourdrinkingwater.ca.

The Clean Water Act is a major part of the Ontario government's commitment to providing every Ontarian with safe drinking water. Preventing contaminants from getting into sources of drinking water is the first step in the multi-barrier approach to Source Water Protection. The Act:

1. Requires local communities to look at existing and potential threats to their water, establish and implement necessary actions to reduce or eliminate **significant drinking water threats**;
2. Empowers communities to take action to prevent threats from becoming significant;
3. Requires public participation on every local Source Protection Plan; and,
4. Requires that all plans and actions are based on sound science.

WELCOME TO YOUR SOURCE PROTECTION REGION



1:650,000

This map is intended to accompany the Assessment Report and may be subject to change. Please consult the local Conservation Authority for the latest version and assistance with proper interpretation.

Base data is provided by the Ontario Ministry of Natural Resources. Produced by the South Nation River Conservation Authority under license.

Copyright © Queen's Printer for Ontario, 2016.

Legend

• Towns

— Raisin Region Source Protection Area

— South Nation Source Protection Area

— Municipality

— Rivers and Lakes

Vulnerable Areas

IPZ-1

IPZ-2

WHPA-A

WHPA-B

WHPA-C

WHPA-D

DRINKING WATER SOURCE
PROTECTION
DE L'EAU POTABLE À LA SOURCE



Raisin Region
Conservation Authority
Office de protection de la
nature de la région Raisin



SOUTH NATION
CONSERVATION
DE LA NATION SUD



Ontario

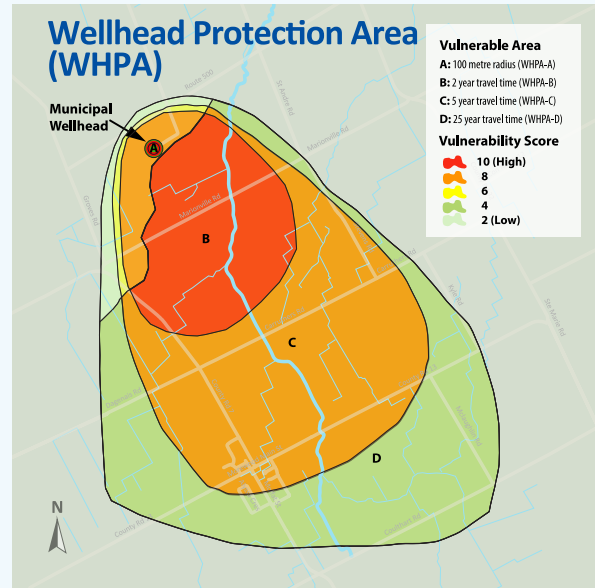
WHAT IS AN INTAKE PROTECTION ZONE?

Surface water intakes draw water from rivers and lakes to provide drinking water. An Intake Protection Zone (IPZ) is an area of water or land located within a specific distance of an intake.

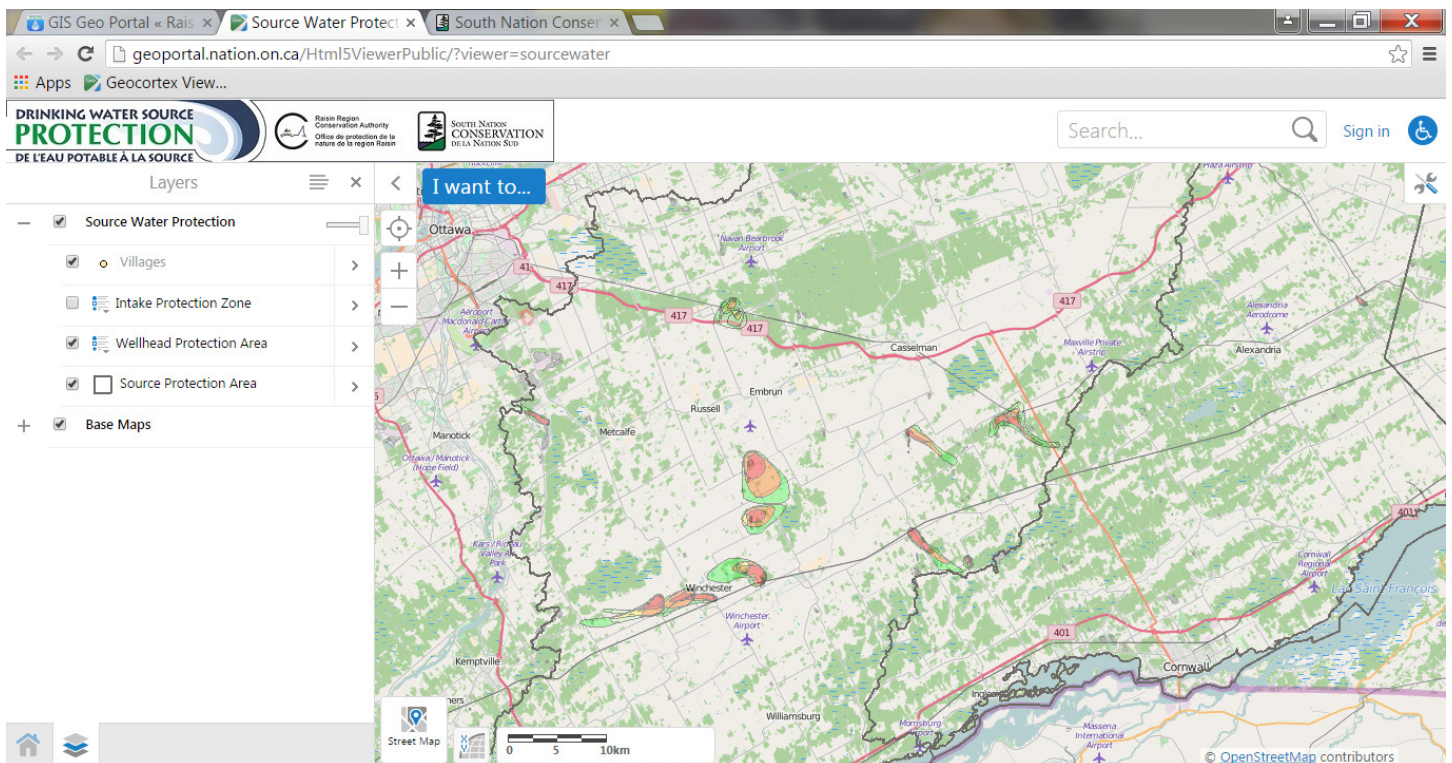


WHAT IS A WELLHEAD PROTECTION AREA?

A Wellhead Protection Area (WHPA) is the area around a well where land use activities have the potential to affect the quality of water that flows into the well.



Visit our interactive Geo-Portal to learn more about vulnerable areas in your region
(www.yourdrinkingwater.ca)



WHAT IS RISK MANAGEMENT PLANNING?

The Risk Management Office is established to assist in the implementation of the Clean Water Act and includes Risk Management Officials (RMO) assisted by local Risk Management Inspectors (RMI).

The RMO and RMIs establish guidance documents for risk assessments, prepare Risk Management Plans (RMP) for [prescribed activities](#), develop resources, and negotiate, establish and approve RMPs with property owners. They also monitor implementation and performance of the RMPs, and report to the [Source Protection Authority](#).

The RMO and RMIs work closely with property owners, Municipal staff, local Conservation Authorities and agencies such as the Ministry of the Environment, Conservation and Parks (MECP), Ministry of Agriculture, Food and Rural Affairs (OMAFRA), the Ministry of Municipal Affairs and Housing (MMAH), and the Ministry of Natural Resources (MNR).

WHAT ARE THE RMP HOLDER'S RESPONSIBILITIES?

Property owners or those engaged in activities on a property are responsible for carrying out the agreed upon risk management measures. This might include keeping updated records as well as providing information when requested by the Risk Management Office.

CONTACTS

CONSERVATION AUTHORITIES

Raisin Region Conservation Authority

18045 County Road 2 PO BOX 429
Cornwall ON K6H 5T2
613-938-3611
www.rrca.on.ca
@rrcawatershed

South Nation Conservation

38 Victoria Street PO Box 29
Finch ON K0C 1K0
613-984-2948
www.nation.on.ca
@SouthNationCA

Jason Symington, Project Manager

Raisin-South Nation Source Protection Region
Local and International: (1) 613-938-3611 ext.224
Toll Free: 1-866-938-3611 ext.224
jsymington@nation.on.ca

Spills Action Centre

Report spills of pollutants (e.g. oil, chemicals) to the Spills Action Centre
Toll Free: 1-800-268-6060 TTY: 1-855-889-5775
www.ontario.ca/page/report-spill

SINGLE TIER MUNICIPAL CONTACTS

City of Ottawa

110 Laurier Avenue West
Ottawa ON K1P 1J1
613-580-2400
www.ottawa.ca

City of Cornwall

360 Pitt Street
Cornwall ON K6J 3P9
613-930-2787
www.cornwall.ca

Town of Prescott

360 Dibble Street West PO Box 160
Prescott ON K0E 1T0
613-925-2812
www.prescott.ca

UPPER TIER MUNICIPAL CONTACTS

United Counties of Prescott and Russell

59 rue Court Street PO Box 304 L'Original
ON K0B 1K0
613-675-4661
www.prescott-russell.on.ca

United Counties of Stormont, Dundas and Glengarry

26 Pitt Street
Cornwall ON K6J 3P2
613-932-1515
www.sdg.on.ca

United Counties of Leeds and Grenville

25 Central Ave. W Suite 100
Brockville ON K6V 4N6
613-342-3840
www.leedsgrenville.com

LOWER TIER MUNICIPAL CONTACTS

Township of Alfred and Plantagenet

205 Old Highway 17 PO Box 350
Plantagenet ON K0B 1L0
613-673-4797
www.alfred-plantagenet.com

Champlain Township

948 Pleasant Corner Road E Vankleek Hill
ON K0B 1R0
613-678-3003
www.champlain.ca

Township of East Hawkesbury

5151 St Anne Road PO Box 340
Saint Eugene ON K0B 1P0
613-674-2170
www.easthawkesbury.ca

Township of North Dundas

636 Lawrence Street PO Box 489
Winchester ON K0C 2K0
613-774-2105
www.northdundas.com

Township of South Dundas

34 Ottawa Street PO Box 740
Morrisburg ON K0C 1X0
613-543-2673
www.southdundas.com

The Nation Municipality

958 Route 500 West
Casselman ON K0A 1M0
613-764-5444
www.nationmun.ca

Augusta Township

3560 County Road 26 RR2
Prescott ON K0E 1T0
613-925-4231
www.augusta.ca

City of Clarence-Rockland

1560 Laurier Street
Rockland ON K4K 1P7
613-446-6022
www.clarence-rockland.com

Town of Hawkesbury

600 Higginson Street
Hawkesbury ON K6A 1H1
613-632-0106
www.hawkesbury.ca

Township of North Glengarry

90 Main Street PO Box 700
Alexandria ON K0C 1A0
613-525-1110
www.northglengarry.ca

Township of South Glengarry

6 Oak Street
Lancaster ON K0C 1N0
613-347-2040
www.southglengarry.com

Russell Township

717 Notre-Dame Street
Embrun ON K0A 1W1
613-443-3066
www.russell.ca

Village of Casselman

741 rue St-Jean PO Box 710
Casselman ON K0A 1M0
613-764-3139
www.casselman.ca

Township of Edwardsburgh/Cardinal

18 Centre Street PO Box 129
Spencerville ON K0E 1X0
613-658-3055
www.twpec.ca

Municipality of North Grenville

285 County Road 44
Kemptville ON K0G 1J0
613-258-9569
www.northgrenville.ca

Township of North Stormont

15 Union Street
Berwick ON K0C 1G0
613-984-2821
www.northstormont.ca

Township of South Stormont

2 Mille Roches Road PO Box 84
Long Sault ON K0C 1P0
613-534-8889
www.southstormont.ca

GLOSSARY

Some terms in this document have been **highlighted**;
See these and other terms defined below:

Agricultural Source Material (ASM)

Treated or untreated material that is capable of being applied to land as a nutrient.

Aquifer

From the Latin for “water carrier”, a geological formation that stores and is capable of transmitting water in sufficient quantities to serve as a sustainable source of water.

Circumstances

Details about what makes an activity a threat, developed due to circumstantially variable risk factor.

Dense Non-Aqueous Phase Liquid (DNAPL)

DNAPLs are chemicals that are heavier or denser than water and do not dissolve easily in water. They can flow through fractures in rock and clay to sink and settle below the water table.

Non-Agricultural Source Material (NASM)

Material that is not from an agricultural source and that is capable of being applied to land as a nutrient (e.g. bio-solids).

Organic Solvents

Compounds which are able to dissolve solids, gases and liquids, and may be flammable.

Pathogen

Disease-causing organism such as virus, bacterium, prion, or fungus.

Prescribed Activities

Activities defined in the Clean Water Act as potential threats to drinking water sources under certain circumstances.

Prescribed Instrument

Instrument defined in Ontario Regulation 287/07 for which a decision to issue, create or amend must conform with significant threat policies set out in the Source Protection Plan.

Significant Drinking Water Threat

A drinking water threat that, as identified in the Source Protection Plan and table of drinking water threats, poses or has the potential to pose a significant risk to drinking water.

Source Protection Area

Lands and waters that have been defined under Ontario Regulation 284/07 as the “study area” for an Assessment Report and a Source Protection Plan under the Clean Water Act.

Source Protection Authority

A Conservation Authority or other person or body that is required to exercise powers and duties under the Clean Water Act.

Source Protection Committee

Group of individuals appointed by a Source Protection Authority to coordinate Source Protection activities for a Source Protection Area or Region

Source Protection Region

Two or more Source Protection Areas grouped together under Ontario Regulation 284/07.

More terms and definitions can be found at: www.yourdrinkingwater.ca

SOURCE WATER PROTECTION BROCHURES

Check out our series of educational brochures for more information and helpful tips on how to protect drinking water.





RAISIN-SOUTH NATION SOURCE PROTECTION REGION

www.yourdrinkingwater.ca

Raisin Region Conservation Authority

18045 County Road 2
PO BOX 429
Cornwall, ON
K6H 5T2
1-866-938-3611

South Nation Conservation

38 Victoria Street
PO Box 29
Finch, ON
K0C 1K0
1-877-984-2948

This project has received funding support from the Ontario Ministry of the Environment, Conservation and Parks.
Such support does not indicate endorsement by the Ministry of the contents of the material.
These resources have been created for local information purposes and may be subject to change.
For legislation and regulations visit www.ontario.ca